

BT-9107-P6-G2

Ruggedized Edge AI computing platform supporting NVIDIA® RTX 3070 GPU card or dual NVIDIA® Tesla T4 GPU Cards, Intel® 10th Gen Xeon® Core™ processor with 6 GbE PoE

Features

- Intel® 10th Gen (Comet Lake-S) with W480E chipset
- Supports dual NVIDIA Tesla T4 GPU or RTX-30 series up to 250W GPU
- 1x HDMI + 1x VFA (2 independent displays)
- TPM2.0 support
- 2x outside accessible SATA SSD, supporting RAID 0,1

System

CPU	10th generation Intel® Xeon® Core™ i9/i7/i5/i3 processor in LGA1200 socket
Chipset	Intel® W480E
Memory	2x 260-pin DDR4 SO-DIMM sockets, supporting 2933 (i9/ i7 CPU)/2666(i5/ i3 CPU)/2400 MHz (Pentium/ Celeron CPU) SDRAM up to 64GB (ECC / Non-ECC)
Graphics	Integrated Intel® HD Graphics
LAN chipset	1x Intel® WGI225LM 2.5GigE LAN 1x Intel® WGI219LM PCIe controllers w/ iAMT14.0 6x Intel® WGI211AT PCIe controllers for PoE
Watchdog timer	1~255 levels reset
ATA	2x Serial ATA ports with 600MB/s HDD transfer rate
Storage	2x 2.5" drive bays (outside accessible) 1x M.2 B key (2242/3052/2280) w/ (PCIex2+USB3.0+SATA) interconnected with SIM for 5G/ LTE expansion or storage (either one)
OS support	Windows 10 IOT Enterprise 2019 Linux (Kernal 4.9

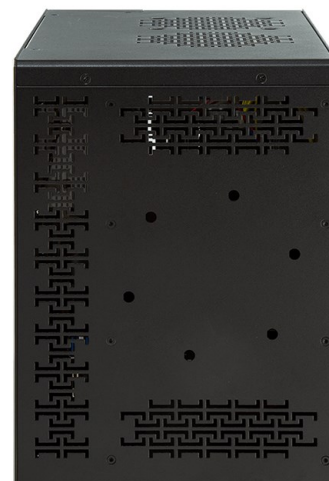
I/O

Serial Port	2x RS-232/422/485 configurable (default RS-232)
USB	2x USB 3.2 Gen2 (10Gbps) / 2.0 ports Internal USB dongle
LAN	2x RJ-45 ports for GbE/2.5GbE 6x RJ-45 ports for PoE (Power budget 60W)
Video	1x HDMI 1x DB-15 female connector for Analog RGB
Digital I/O	16x DI, 16x DO (1.5KV isolation protection / DO supports 24V 200mA)
Audio	Mic-in/Line-out
Expansion Bus	1x mini-PCI Express Slots interconnected with SIM card sockets for optional WiFi/BT/3G/LTE/ GPS (PCIex1+USB2.0, Full Size) 1x M.2 E key (2230) with PCIex1+USB2.0, for Wireless 1x M.2 B key (2242/3052/2280) w/ (PCIex2+USB3.0+SATA) interconnected with SIM for 5G / LTE expansion or for storage (either one) 2x PCIe x16 slot (via x 8 lanes) or 1x PCIe x16 slot (via x 16 lanes) Support dual Tesla or 250W GPU card 1x PCIe x4 slot (power budget 25W)

Front



Rear



BT-9107-P6-G2

Ruggedized Edge AI computing platform supporting NVIDIA® RTX 3070 GPU card or dual NVIDIA® Tesla T4 GPU Cards, Intel®10th Gen Xeon®Core™ processor with 6 GbE PoE

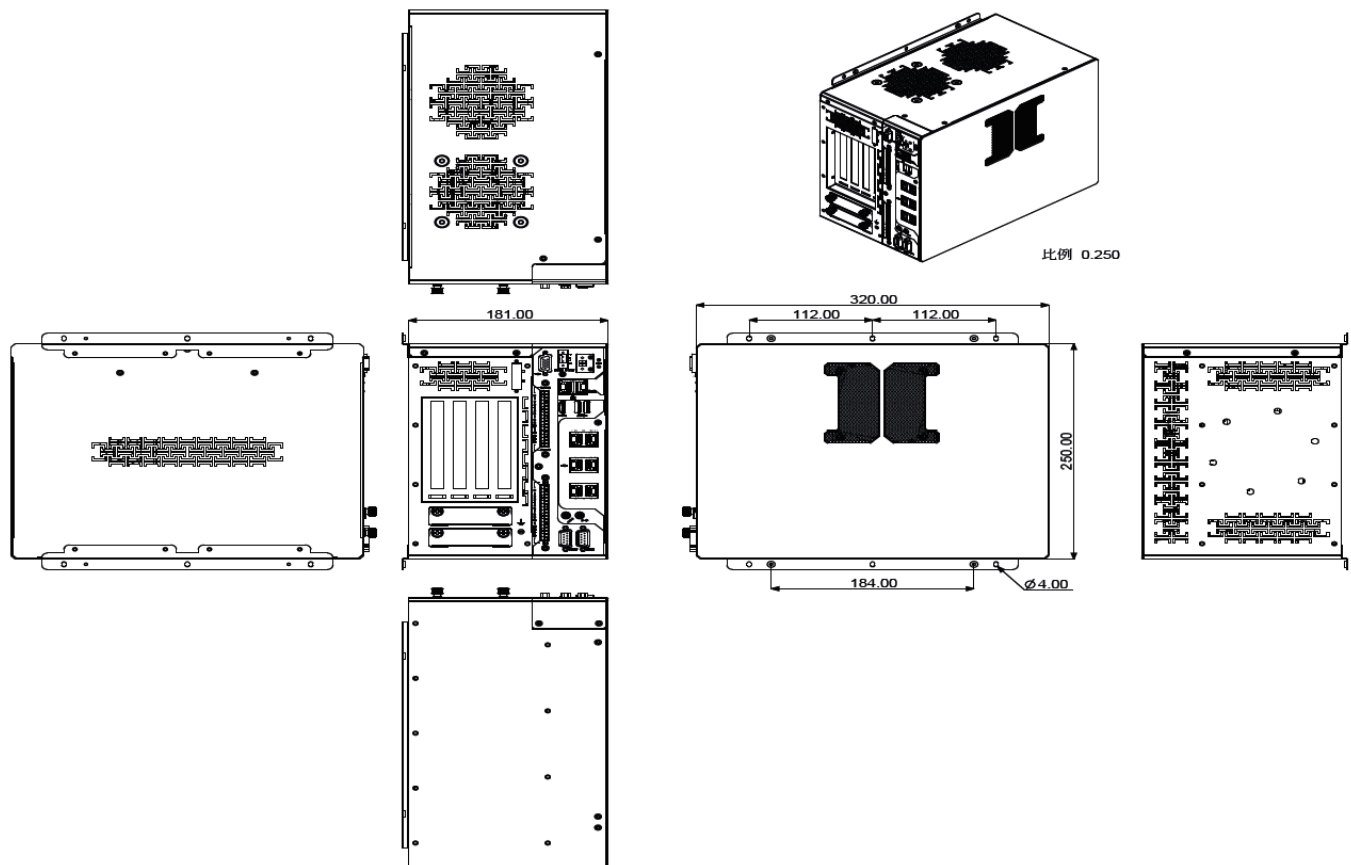
Environmental

Operating Temp.	80W TDP CPU : -20 ~ 50°C
	65W TDP CPU : -20 ~ 55°C
	35W TDP CPU : -20 ~ 70°C
	w/ NVIDIA® Tesla T4 : -20 ~ 50°C
	w/ NVIDIA® RTX-3070 : -20 ~ 45°C
Storage Temp.	-40 ~ 85°C
Humidity	10 ~ 95% @ 50°C , non-condensing
Vibration	Comply with MIL-STD-810G, Method 514.6, Category 4 w/ SSD
Shock	Comply with MIL-STD-810G, Method 516.6, Table 516.6-II, 20G

Mechanical

Main Power Input	DC 12~36V input (w/ 2-pin DC input terminal block)
Secondary Power Input	DC 12-36V input (w/ 4-pin DC input terminal block for graphic cards power support)
Ignition Switch	2-pin terminal block: IGN, GND
Construction	Metal
Mounting	Wall-mount
Dimensions	181 x 320 x 250mm
Weight	7.4kg
Certification	CE/FCC Class A



Technical drawing



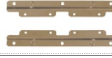



BT-9107-P6-G2

Ruggedized Edge AI computing platform supporting NVIDIA® RTX 3070 GPU card or dual NVIDIA® Tesla T4 GPU Cards, Intel® 10th Gen Xeon® Core™ processor with 6 GbE PoE

Optional configuration (*CTOS Kit)

MK-4C-4G/8G/16G/32G	DDR4-2400 4GB/8GB/16GB/32G(DDR4-2933) SDRAM DIMM kit	
WIFI-IN2550	Intel AX200NGW M.2 Wi-Fi 6 module w/2 x 30cm internal wires	
ANT-D11	1 x WiFi dual-band 2.4G/5G antenna	
ANT-H11	1 x 2dBi HSUPA antenna	
Xeon® W-1250E	Intel® Xeon® W-1250E processor, L2/12M, 3.5G	
Core™ i9-10900E	Intel® 10th Gen. Core™ i9-10900E processor, L2/20M, 2.8G	
Core™ i9-10900TE	Intel® 10th Gen. Core™ i9-10900TE processor, L2/20M, 1.8G	
Core™ i7-10700E	Intel® 10th Gen. Core™ i7-10700E processor, L2/16M, 2.9G	
Core™ i5-10500E	Intel® 10th Gen. Core™ i7-10700TE processor, L2/16M, 2.0G	
Core™ i5-10500TE	Intel® 10th Gen. Core™ i5-10500TE processor, L2/12M, 2.3G	
Core™ i3-10100E	Intel® 10th Gen. Core™ i3-10100E processor, L2/6M, 3.2G	
Core™ i3-10100TE	Intel® 10th Gen. Core™ i3-10100TE processor, L2/6M, 2.3G	

Optional Accessories

WMK-7000	Wall-mount kit for FPC-7XXX Series	
PAC-180W6C-FSP	180W AC/DC 24V adapter kit (For System)	
PAC-280W6C-MW	280W AC/DC 24V adapter kit (For GPU Box)	
PAC-480W6C-MW	480W AC/DC 24V DIN Rail adapter kit (For System + GPU Box)	
FAN-9107T4-1	Thermal Kit for 1 x NVIDIA® Tesla T4 GPU card	
FAN-9107T4-2	Thermal Kit for 2 x NVIDIA® Tesla T4 GPU card	